

EQUIPMENT LEASING NEWSLETTER

May 2007

Wave Measurement

New Equipment Available for the 2007 Field Season:

- One ORE SWR shallow water release pop-up
- Ten new model Sonotronics tilt pingers
- Four more CART releases and one AMD 200R deck box
- One more OML pinger receiver
- Nineteen external ADCP battery packs
- And ASL now has a total of 14 Teledyne RDI Workhorse ADCPs
 - 3 @ 300kHz, 8 @ 600kHz, 2 @ 1200 kHz, and 1 @ 150kHz

Latest Mooring Design

ASL has designed and manufactured a new bottom frame called the **LowPro5** for

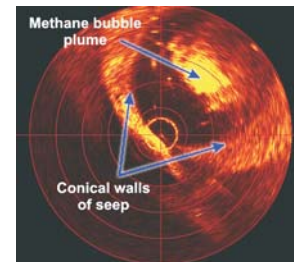


mounting RDI Sentinel ADCPs. This elegantly designed frame can be taken apart for shipping and is very stable and easy to deploy. Six LoPro5's are being deployed nearshore Equatorial Guinea for a 1-year program of current and wave measurements for future terminal operations. The LowPro5 is for lease or sale as is our line of mooring cages.

Recent Clients Include:

Geological Survey of Canada

While studying natural methane releases in the Mackenzie Delta, Rob Bowen and the Geological Survey of Canada used ASL's Imagenex 881A imaging sonar to characterize the plume.



The Woods Hole Group of East Falmouth, MA, is doing oceanographic research offshore Gibraltar for an energy development prospect utilizing ASL's 150kHz Quartermaster ADCP.



Golder Associates Ltd. - RDI 600 kHz WH, ADCP boat bracket, SD-30 current meter for use in Yellowknife.

State of Maine, Dept of Marine Resources - RDI 300kHz WH ADCP boat bracket.

Genivar, Quebec - 1200kHz RDI ADCP (*dropped by helicopter and still working!*), RBR CTD, 2 Cart & deck box, bottom frame, and CL Macrowave.

Coastal Leasing, MA - RBR XR420 CTD and 2 RDI External battery cases.

Excel Geophysics, AB - RBR Xr420 TG and DR-1050 for use in Egypt.

Continental Shelf Associates Inc, Florida - SUBS A2 and RBR XR420 CTD+Tu.

Devine Tarbell & Associates, Washington - 300kHz RDI ADCP for use in Virginia.

Rescan, Vancouver - 2 300kHz RDI ADCPs, 2 Carts, 1 AMD200R, 2 bottom frames and a RBR XR420 CTD for use in Africa.

Sea Engineering, California - 2x1200kHz RDI ADCPs for use in a dredging study in the Great Lakes.

"Reliable Rentals at Reasonable Prices"

Check out our rates at www.aslenv.com

ASL continues to offer all equipment to our U.S. clients F.O.B. Washington

Current Measurement

Ice Measurement

Sediment Transport

Fish Habitat Studies

Coastal Engineering

ASL

ASL Environmental
Sciences

1986 Mills Road
Sidney, British Columbia
V8L 5Y3 Canada
Phone: 250.656.0177
Fax: 250.656.2162
Web: www.aslenv.com
Email: asl@aslenv.com

Contact Rick Birch,
Senior Oceanographer at:
rbirch@aslenv.com
cell 1-250-514-9009