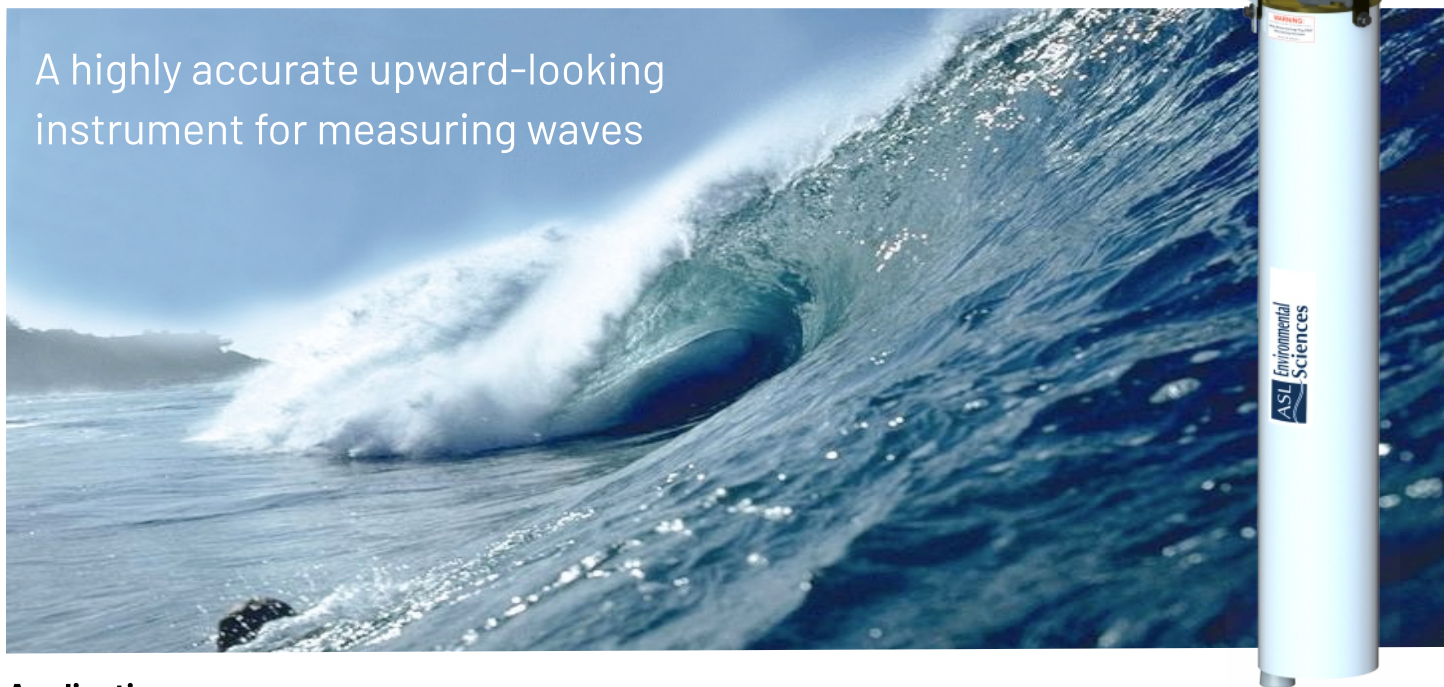




Environmental
Sciences

Wave Profiler™

A highly accurate upward-looking instrument for measuring waves



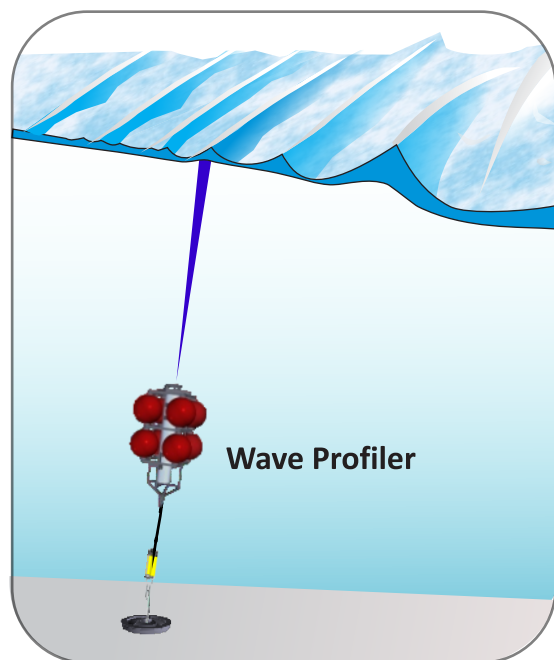
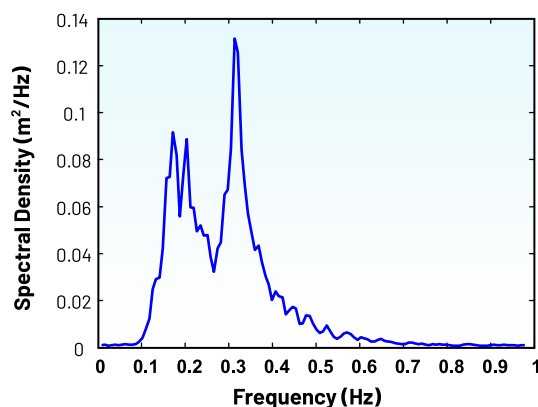
Applications

The ASL Wave Profiler™ is an ideal instrument for very accurate wave measurements for many applications including:

- Offshore Oil Platforms
- Dredging and Sediment Transport
- Research Oceanography
- Fast Ferry Wake
- Bridges and Causeways
- Design of Coastal Structure
- Infra-gravity Waves
- Seasonal Studies

Features

- Allows derivation of standard ocean wave parameters from time series measurements of the acoustic range to the sea surface.
- Ideal for measuring surface gravity waves from depth.
- Provides very linear sensor characteristics eliminating errors due to steep-sided and long swell-waves. Unlike pressure-wave instruments, does not depend on linear wave theory assumptions.



Environmental
Sciences

ASL Environmental Sciences
#1-6703 Rajpur Place
V8M 1Z5 Saanichton, BC
Canada

Phone: +1250-656-0177
Email: asl@aslenv.com
Website: aslenv.com



Features (continued)

- Real-time output available through RS-232 or RS-422 digital serial communications
- Offers exceptional data storage capacity allowing measurements at 2 Hz burst or continuous sampling (4 Hz sampling available at short ranges).

Wave Profiler™ Specifications

UPWARD LOOKING SONAR

	Standard
Operating Frequency	420 kHz
Beam Width	0.9° (center beam to half power point)
Sampling Rate	2 Hz
Duty Cycle	up to 100%
Range	225 m
Precision	± 0.05 m
Resolution	0.01 m
Gain	4 levels

REALTIME CLOCK

Accuracy	± 5 min/year
----------	--------------

DATA STORAGE

Standard	8 GB Compact Flash
Optional	16 GB Compact Flash

POWER

Standard	Provides more than 26 weeks at 2 Hz sampling and 100% duty cycle
Optional	Extended alkaline battery pack or carrier for Lithium battery packs to extend deployment duration.

SIZE	0.17 m diameter x 1.0 m length
-------------	--------------------------------

SOFTWARE The following Windows-based software is included with the Wave Profiler™ package:

- IPS5Link Communications software to enable setup and download functions.
- WaveSoft Allows computation and display of significant wave height, peak period and auto spectra

OPTIONAL FEATURES

- Sea Ice Draft Profiling with a high resolution pressure sensor (Ice Profiling Sonar™—IPS).
- Extended alkaline battery pack or carrier for Lithium battery packs to extend deployment duration.
- Custom versions of the Wave Profiler™ are also available for Autonomous Underwater Vehicles (AUV).
- Both taut line and gimballed bottom mount moorings available.

